

Bar-codes

DOS

The reference "DOS" (previously called 580B) was constructed in 1987 to fit the [DOS-operated] Mk I Duplimate. Unfortunately this bar-code has some flaws. It is for example easy to mistake the 9 of Diamonds for the Jack of Hearts. The DOS barcode is not recommended for use in the MkIV.



DOS

WIN

The reference "WIN" (previously called 580H) was constructed in 1998 to fit the [Windows operated] MkIV machine.



WIN

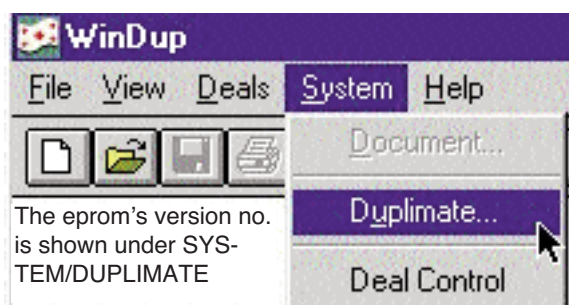
COMPATIBILITY

The main rule is:

DOS-cards for DOS-machines

WIN-cards for WinDup operated machines

The exception to the rule is that the machines built during a transition period can read both the old and the new bar-code. If you are in doubt about what version you got, you can check the version no. as shown to the right.



Eprom (the machine's internal software)

-1.07 DOS cards only (Eprom should be upgraded to, at least, 1.08 for a number of reasons).

1.08 does read both DOS and WIN. The error-rate with WIN cards is lower.

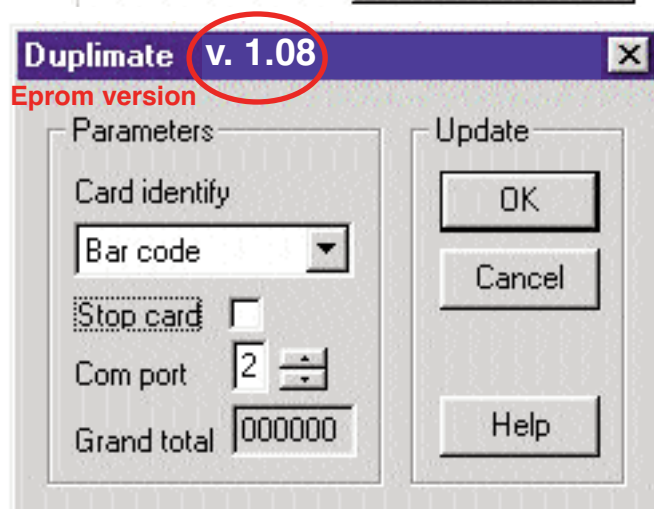
1.09- reads **WIN cards only**.

NT-based Windows

Note that Windows versions later than '98 **requires:**

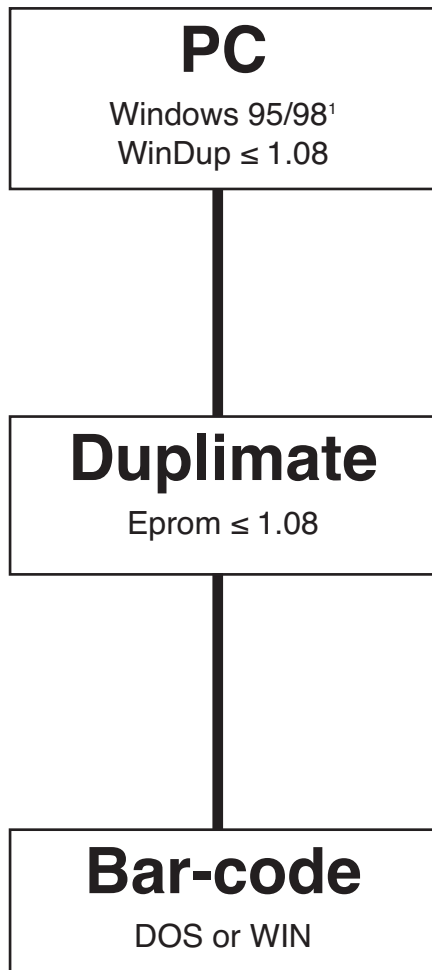
- DupSoft (part of the BOS package)
- eprom 1.10 (or higher)
- WIN barcode

c.f. attached flow chart

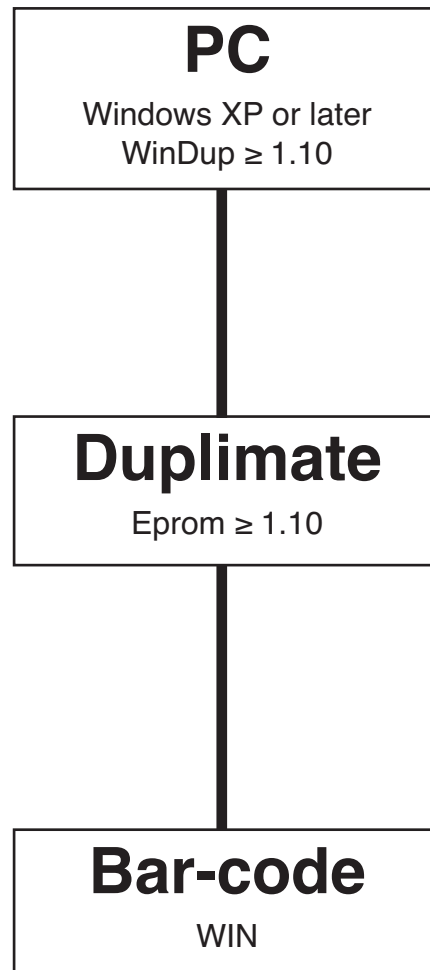


RECOMMENDED CONFIGURATION

Old



New



¹ WinDup 1.08 will run poorly under later versions of Windows.